

# Breathable Smock Top



## CL80 Smock Top

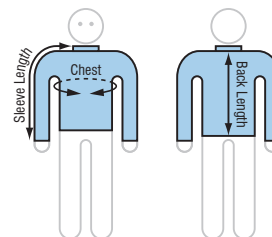
- ✓ R-Tech<sub>5</sub>: Highly waterproof, highly breathable shell with fully taped seams for maximum protection and comfort in all conditions.
- ✓ Front opening with internal gusset, water resistant zip and neck closure tab delivers maximum water protection in cold conditions.
- ✓ Side access breast pocket with water resistant zip provides easy access; even when wearing a PFD.
- ✓ Neoprene waist band with dual adjustment tabs and non-slip 'smoothy' finish on inside reduces ride-up and water wicking; fabric coated on outside for maximum durability.
- ✓ Lightweight micro-mesh lining provides a captive air layer for temperature control and eliminates that 'sticky' feel when you're sweating or wet. Fine micro-mesh weave minimises snagging on watch bands etc.
- ✓ Comfortable stretch cuff and neck seals ensure a snug fit and minimum water ingress.

- ✓ Lightest weight without compromising on performance; the result of premium technical fabrics and practical design features to meet the demands of today's competitive sailors.
- ✓ New 'athletic' cut means a closer fit, designed to be worn under a PFD, but still providing full freedom of movement for the most demanding manoeuvres.
- ✓ Adult sizes XXS - XXXL

**Also available in Junior Sizes J08, J10, J12**

SMOCK TOP		JUNIOR: 08 10 12			ADULT: XXS XS S M L XL XXL XXXL							
Chest*	cm	77	86	94	100	106	111	119	124	129	133	135
	in.	30	34	37	39	42	44	47	49	51	52	53
Back Length*	cm	54	58	63	65	68	70	72	74	76	78	80
	in.	21	23	25	26	27	28	28	29	30	30	31
Sleeve Length*	cm	62	66	71	76	79	82	84	86	88	90	92
	in.	24	26	28	30	31	32	33	34	35	35	36

\*Sizes are based on garment not person



SAILING GEAR LAYERING OPTIONS	Feature	Cold Wet Windy	Cold Dry Light/No Wind		Warm Wet Windy		Hot Wet Windy	Very Hot
		3	2	2	2	1	2	1
NUMBER OF LAYERS								
CL21 Thermal Top	Warm when dry	●	●	●				
CL24 Neoprene Skin Top	Warm when wet	●		●		●		
CL20 Rash Top	Maximum sun protection & breathability				●		●	●
CL80 Smock Top	Waterproof and windproof barrier	●	●		●		●	

# Trapeze Harnesses



CL10



CL11

## CL10 Sailing Trapeze Harness

- ✓ Highly adjustable with excellent back support.
- ✓ Multiple adjustment options for optimum fit.
- ✓ Anatomically shaped shoulder straps with 3D mesh padding and lower back cushion for maximum comfort.
- ✓ Stainless steel tube spreader bar with 6 point fixing.
- ✓ Sizes S - XL

## CL11 Racing Trapeze Harness

- ✓ Custom fit with full back support.
- ✓ Multiple adjustment options for custom fit.
- ✓ Tough-Tech™ reinforced seat.
- ✓ Articulated 2-segment design provides freedom of movement.
- ✓ Thermoformed battened back shell for maximum back support.
- ✓ Anatomically shaped shoulder straps with 3D mesh padding.
- ✓ Stainless steel tube spreader bar with 8 point fixation.
- ✓ Sizes S - XXL

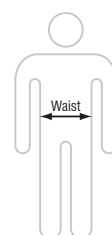


## Trapeze Harnesses

Suits Waist\*

	S	M	L	XL	XXL
cm	<76	76-81	81-86	86-92	>92
in.	<30	30-32	32-34	34-36	>36

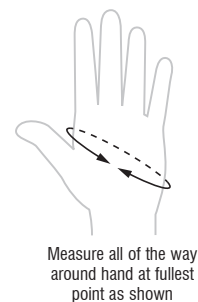
\*Sizes are based on person not garment





## Gloves &amp; Cap

Glove Size		XXXXS	XXXS	XXS	XS	S	M	L	XL	XXL
Fullest Point of Hand	cm	18	19	20	21	22	23	24	25.5	26.5
	in.	7	7 1/2	7 1/8	8 1/4	8 5/8	9	9 1/2	10	10 3/8



RF4870



RF4871

**RF4871 - Race Glove, Three Full Finger****RF4870 - Race Glove, Cut Finger**

- ✓ 'Amara' synthetic leather for maximum durability, minimum stretch and shrinkage.
- ✓ Double Aramid stitched in high wear areas.
- ✓ Double thickness palm and fingers for protection and grip.
- ✓ Low cut wrist band for free movement and ClearStart™ Watch vision.
- ✓ Mesh panels for flexibility and comfort.
- ✓ Sizes XXXXS - XXL.



RF4881



RF4880

**RF4881 - 'Sticky' Race Glove, Three Full Finger****RF4880 - 'Sticky' Race Glove, Cut Finger**

- ✓ Sticky gloves reduce fatigue by minimising the physical effort required to hold rope.
- ✓ Double Aramid stitched in high wear areas.
- ✓ 'Amara' synthetic leather for maximum durability, minimum stretch and shrinkage.
- ✓ Double thickness palm and fingers for protection and grip.
- ✓ Low cut wrist band for free movement and ClearStart™ Watch vision.
- ✓ Mesh panels for flexibility and comfort.
- ✓ Sizes XXS - XXL.



RF4666

**RF4666 - Sailing Glove**

- ✓ 'Amara' synthetic leather for maximum durability, minimum stretch and shrinkage.
- ✓ Double thickness palm and fingers for protection and grip.
- ✓ Mesh panels for flexibility and comfort.
- ✓ Sizes XS - XXL.



RF2602

**RF2602 - Ronstan Technical Sailing Cap**

- ✓ Breathable
- ✓ Quick Dry
- ✓ Retainer cord and clip
- ✓ Washable
- ✓ One size fits most
- ✓ Polyester microfibre
- ✓ Hydrophobic outer layer
- ✓ Excellent sun protection - High IQ™ intelligent effects fabric
- ✓ Sweat band for increased comfort and grip
- ✓ Black under peak to reduce glare
- ✓ Adjustable back closure (hook & loop) for secure fit

## Shoes &amp; Boots



CL67

**CL67 - Superflex Sailing Shoes**

- ✓ Ultra-lightweight.
- ✓ Superflex web sole for positive grip and greater range of movement.
- ✓ Ideal for trapezing.
- ✓ Internal toe separator for improved stability.
- ✓ Glide skin ankle seal minimises water ingress.
- ✓ Bridge strap for ultimate security.
- ✓ Multi-layer padded heel, ankle and toe protection.
- ✓ Sizes XXXS - XXL



CL63

**CL63 - Sailing Boot**

- ✓ Traditional razor-cut sole for grip.
- ✓ Side zippers for easy fitting.
- ✓ Reinforced neoprene upper for hiking.
- ✓ Lightweight, comfortable and exceptional value.
- ✓ Sizes XXXS - XXL



CL62

**CL62 - Race Boot**

- ✓ Hard wearing moulded sole for firm foot support.
- ✓ Side zippers for easy fitting.
- ✓ Fastener tab secures zipper.
- ✓ Extra heel and toe texturing provides reliable grip.
- ✓ Padded neoprene upper with reinforcement for hiking comfort.
- ✓ Comfortable and hard wearing.
- ✓ Sizes XXXS - XXL



CL66

**CL66 - Offshore Boot**

- ✓ Traditional razor-cut sole for grip.
- ✓ 3/4 length with snug draw-string top.
- ✓ Reinforced heel, ankle and toe areas for added protection.
- ✓ Durable rubber outer with neoprene lining for warmth and comfort.
- ✓ Sizes XXS - XXXL

Footwear		XXXS	XXS	XS	S	M	L	XL	XXL
Foot Length	cm	21 - 22	22.5 - 23.5	23.5 - 24.5	24.5 - 25.5	25.5 - 26.5	26.5 - 27.5	27.5 - 28.5	28.5 - 29.5
	in.	8 1/4 - 8 5/8	8 7/8 - 9 1/4	9 1/4 - 9 5/8	9 5/8 - 10	10 - 10 3/8	10 3/8 - 10 3/4	10 3/4 - 11 1/4	11 1/4 - 11 5/8
<b>Typical Equivalent Country Sizing*</b>									
Europe		33 - 34	35 - 36	36 - 38	38 - 40	40 - 43	43 - 44	44 - 46 1/2	46 1/2 - 48 1/2
U.S. & Canada	M	3	3 1/2 - 4 1/2	4 1/2 - 6	6 - 7 1/2	7 1/2 - 9	9 - 10 1/2	10 1/2 - 12 1/2	12 1/2 - 14
	W	3	5 - 6	6 - 7 1/2	7 1/2 - 9	9 - 10 1/2	10 1/2 - 12	12 - 14	14 - 15 1/2
U.K.	M	2	3 - 4	4 - 5 1/2	5 1/2 - 7	7 - 8 1/2	8 1/2 - 10	10 - 12	12 - 13 1/2
	W	2	2 1/2 - 3 1/2	3 1/2 - 5	5 - 6 1/2	6 1/2 - 8	8 - 9 1/2	9 1/2 - 11 1/2	11 1/2 - 13
Australia	M	2	3 - 4	4 - 5 1/2	5 1/2 - 7	7 - 8 1/2	8 1/2 - 10	10 - 12	12 - 13 1/2
	W	2	3 1/2 - 4 1/2	4 1/2 - 6	6 - 7 1/2	7 1/2 - 9	9 - 10 1/2	10 1/2 - 12 1/2	12 1/2 - 14
Japan	M	21	21 1/2 - 22 1/2	22 1/2 - 24	24 - 25 1/2	25 1/2 - 27 1/2	27 1/2 - 28 1/2	28 1/2 - 30 1/2	30 1/2 - 31 1/2
	W	21	21 - 22	22 - 23 1/2	23 1/2 - 25	25 - 27	27 - 28	28 - 30	30 - 31

\* Country sizes are indicative only and subject to variation. Your 'foot length' measurement should be used as the most accurate guide for sizing.